

Contents

1 THE SPACE

- 1.1 Introduction
- 1.2 How we work
- 1.3 The space
- 1.4 Photographs
- 1.5 Furniture, fixtures & fittings

2 THE DETAILS

- 2.1 Logistics
- 2.2 Archive of shows
- 2.3 Proposals
- 2.4 Things we'll need from you

APPENDIX

Floor Plan 1:20 at A3

rsvp@periscope.uk
Office +44 (0)207 965 7574
2-4 Tottenham Road, London N1 4BZ
periscope.uk

March 2023

Rev.	Date	Description	Drawn	Check
000	16.03.23	Version 1	KB	KB

1 The space

1.1 Introduction

Microscope is Periscope's investigative space for talking, thinking and testing with natural processes.

We opened our little Dalston shopfront in 2022, as a satellite laboratory to our office on 2nd floor. We use the space as a workshop, conversation space, and to host exhibitions and events that explore issues around community, making and the environment. We are keen to open the space up to artists, makers and other interesting people with great ideas. So far, we have hosted exhibitions of paintings and installations, round-table conversations and a book launch.

Microscope is located just off Kingsland Road, two minutes walk from Dalston Junction Station. The shopfront is clearly visible from the main street. Last year, Dan's Wine Bar opened next door, growing the street into a friendly, vibrant social spot.

We are keen to host interesting projects and proposals, particularly those that support Dalston's local creative community or engage with current environmental issues. This document contains some basic information about Microscope, how we work, and what to do if you'd like to host something with us.



- Microscope
- Dan's Wine Bar
- Dalston Junction Station exit

Microscope
2-4 Tottenham Road
London N1 4BZ



1.2 How we work

Our non-profit space looks to support local, young and emerging creatives

Microscope is a not-for-profit project. We operate a two-tiered pricing system depending on the nature of individual people and their projects.

Tier 1: We offer the space for free to individuals in education or of low-income, to charity programmes, and for projects with a strong environmental or social agenda. In special cases, we can arrange a supporting subsidy for refreshments etc.

Tier 2: We charge a low rate for projects that don't fit into the above category, or are looking to make a direct profit, such as through selling works. This includes a deposit to secure the space. Rates will be agreed individually, and are used to support Tier 1 projects.

We are keen to engage diverse public audiences and local community groups with arts projects. We look to host an array of events, such as workshops, conversations, book launches and film screenings. Due to its size, the space lends itself to more intimate, personal events. We have previously run events in two sittings over one night, or repeated talks subject to demand.

1 Floor installation (Riparian Score, June 2022)



2

1.3 The space

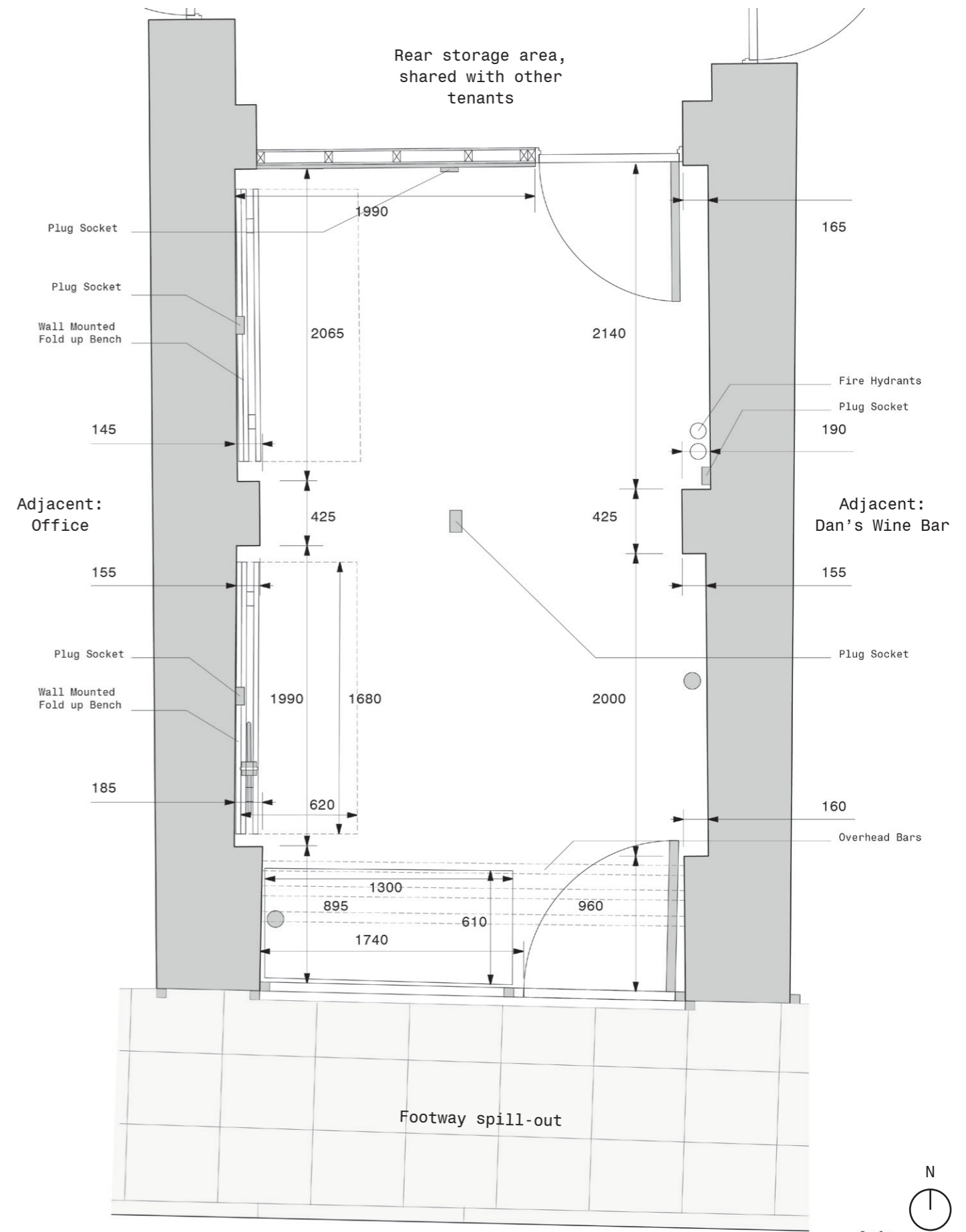
Microscope is a little space, circa 2.8m x 5.5m. It is simple but rough in finish, with some industrial features. It receives good evening sun in the summer months and events can spill-out onto the street.

Size and Layout

The space is roughly rectangular, with a glass shop window and door facing Tottenham Road, a plywood stud rear wall, and two white-painted concrete side walls with rectangular columns. Public entrance is from the street only. The rear space can be used for storage of back-of-house if agreed. There is a large glass window and door to the street, with a security roller-shutter that is closed at night. Our signage is glass-mounted so only visible when the space is open. The floor to ceiling height is 3m.

Capacity

Microscope has a comfortable capacity of 8 seated around a table / 15 seated in a circular or auditorium configuration / 20 standing. Events can spill-out into the footway to accommodate groups of around 30 people.



1 Microscope Floor Plan, nts

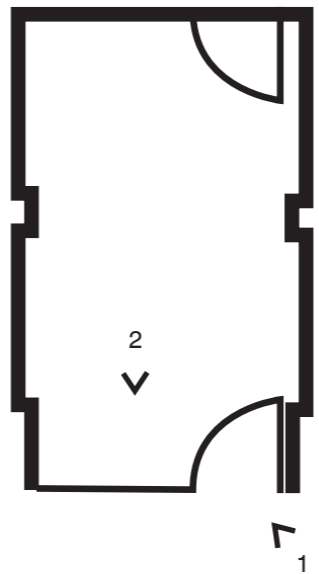
1

1.4 Photographs



1

- 1 External view of shopfront from Tottenham Road, during the Riparian Score exhibition
- 2 Front elevation towards Tottenham Road

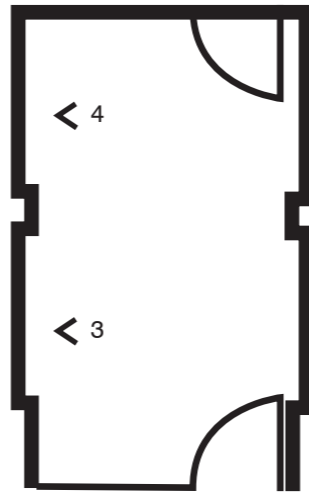


2



3

- 3 Side elevation with bench in open position (front)
- 4 Side elevation with bench in closed position (back)

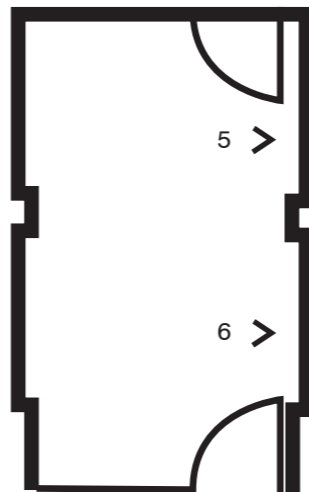


4



3

- 5 Side elevation (back)
- 6 Side elevation (front)

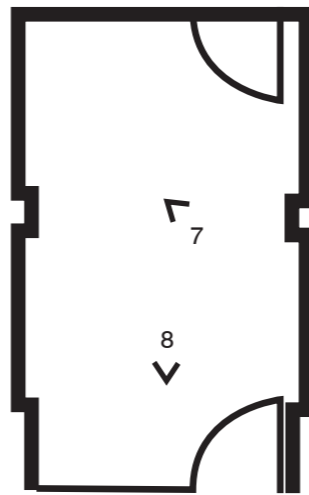


4



7

7 View of ceiling
8 Rear elevation
towards storage
area



8

1.5 Furniture, fixtures & fittings

Fixtures and fittings

A. Fold-down benches x 2

Plywood, 1680mm x 600mm. Can be folded back against wall or raised to create a standing table/bar

B. Window rails

Three steel rails run the length of the front wall above the window. These can take loads of max capacity 30kg

C. Ceiling lights

Three overhead down-lights

Additional to the above, the space is equipped with plug sockets (side walls, rear wall and floor) fire extinguishers and some remnant industrial boxes. Refer to previous pages for photographs and positions on plan.



A



B

Temporary furniture

D. Window cabinet

Plywood storage cabinet with window display space, 1300mm x 610mm, can be removed

E. Hooks and steel shelf

We have made a set of bespoke 21 hooks and a thin shelf for the space, these stand off the wall on plywood blocks, in thin black steel. These can be configured to fit specific exhibition needs.

F. Chairs

We have 14 chairs that can be brought into the space for events (not pictured)

G. Large table

We have a 2100mm x 1200cm table, comprising a heavy plywood top with trestles and a hidden cable tray below (not pictured)

H. Photography lighting

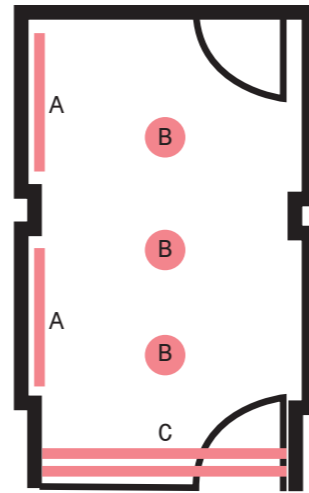
We have two freestanding photography diffuser lights and two freestanding (not pictured)

I. Projector and screen

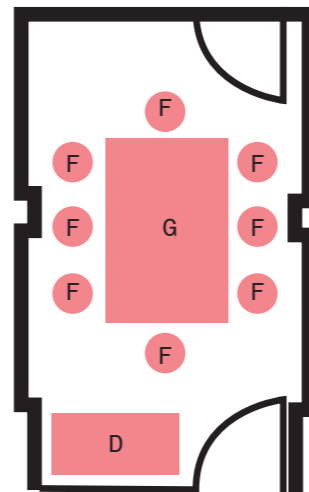
We have a 550 x 350mm digital screen, and can arrange for a projector if needed (not pictured)

J. Sound speaker

We can provide a music speaker (not pictured) Note that the space doesn't contain soft features so acoustics can reverberate if it's very busy.



1



2



C



D



E



E

Additional furniture and fittings may be brought into the space.

1 Key Plan: Fixtures and Fittings

2 Key Plan: Temporary Furniture

2 The details

2.1 Logistics

Marketing and promotions

Periscope will help spread the word by promoting your work on our website and through our social media channels. For each exhibition, Periscope will provide a bespoke vinyl window sign and A5 b&w double sided text hand-out. At the end of each exhibition, we will produce a pamphlet recording the event (see next page)

Opening hours and invigilation

Periscope's office is located above Microscope, on 2nd floor. We operate office working hours between 09:30 - 18:00 Monday to Friday and can arrange invigilation with one of our team members during these hours. We find that 'view by appointment' arrangements work well. We are also happy for exhibitors to invigilate the space themselves during the daytime and evenings. Sometimes we may need to hold private meetings in the space, these will be prior-agreed.

Refreshments

We have an agreement with our neighbours at Dan's Wine Bar to supply delicious organic wines and glasses at a reduced rate. Subject to their staff availability, they can also serve these during events, either by the bottle or at a capped rate. Event dates should be coordinated with their private events. Periscope can provide glasses, a water dispenser and bowls. Our office kitchen is on the 2nd floor and has a small fridge and microwave, which can be used for prep during office hours, providing it doesn't disrupt our work. Snacks and additional drinks can be provided by the exhibitor. Dan's Wine Bar can be rented separately for private events if the exhibitor wishes to do so.

Toilets and storage

If an event is catered by Dan's Wine Bar and they don't have their own private event, then we can use their toilets next-door. Alternatively, for specific events we can arrange toilet access in the ground floor lobby or in our office on 2nd floor. The rear storage area is shared, it may be possible to store goods but in general should be kept clear.

Evening events and spill-out

Dan's Wine Bar have a license to have chairs and tables and serve drinks on the pavement outside Microscope. Evening events at Microscope can either make use of this, or we can notify Dan's in advance if we wish to use the spill-out space in a different way. We ask all events to be courteous of our residential neighbours, and not play excessive loud music or run very late into the night, past circa 10pm.

Security and Insurances

Periscope do not insure third party goods or events, nor does our insurance cover installation or de-installation. Exhibitors should organise this themselves if required. A key may be provided to the exhibitor if required, together with an agreement on our locking-up policy. Microscope directly fronts the street, and has a security roller shutter. We will require risk assessments to be undertaken for all projects, and will provide templates for these.



1 Hanging window installation (Housed & Mortised, August 2022)

1

2.2 Archive of shows

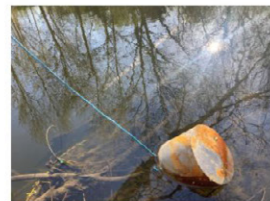
Our Microscope ‘slides’ are a series of small pamphlets that record everything that happens in Microscope.

Periscope will photograph the events, and compile a small publication after they are finished. This will be available on our website, alongside the archive of shows, and can be printed on request.



Viewing by appointment, please email rsvp@periscope.uk
Open for viewing weekdays 14:00-18:00
Ground Floor, 2-4 Tottenham Road, London, N1 4BZ

Past Exhibitions



**Riparian Score:
The River Lea
Variations**
15.06–28.07.2022

Housed & Mortised
04.08-11.08.2022

1

- 1 Microscope website layout
- 2 Riaprian Score ‘Slides’
- 3 Housed and Mortised ‘Slides’

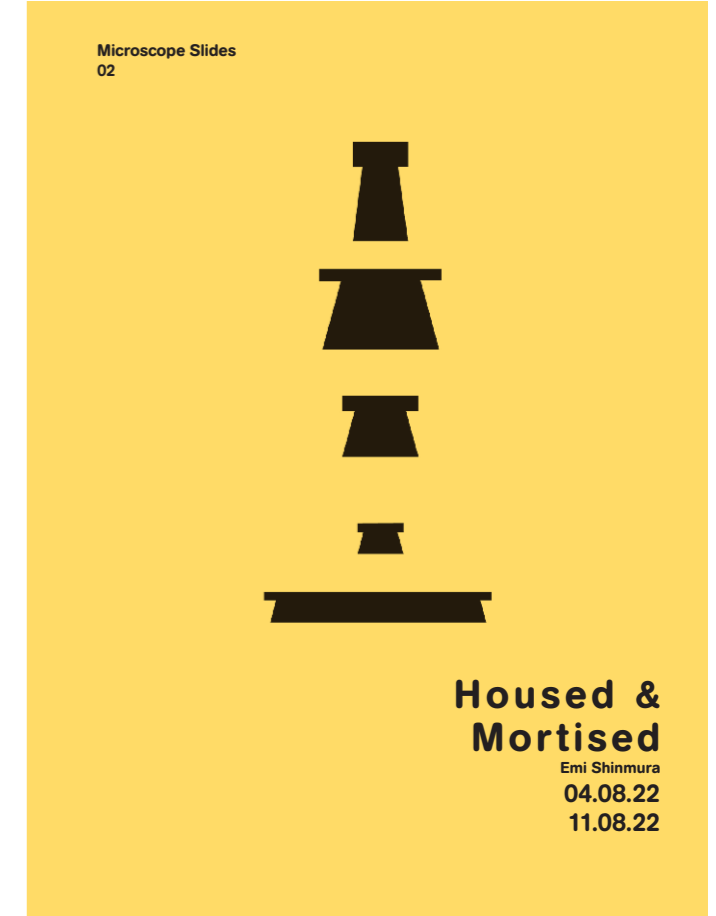


2

01 Riparian Score: The Lea Variations

A visual symphony performed by riverine ecologies upon mild steel, by Kirsty Badenoch. The works invite the river to play itself. They capture the energetic exchanges between river and riverbank - eddies and flows, tidal shifts, micro bacteria rotting and decaying, organic and in-organic matter getting caught and released, the budding and blooming of algae communities, the heaving and cracking of ancient tree roots as winter storms push us through into spring.

[Download Exhibition Catalogue](#)



3

02 Housed & Mortised

An exhibition by designer and woodworker Emi Shinmura. A collection of axonometric drawings of typical Japanese carpentry joints, first published in 2021 in an annotated article in Fine Woodworking Magazine. Emi embraces design through her woodworking background having spent time timber-framing with her traditionally trained carpenter aunt in Japan and from childhood experiences with her instrument-maker grandfather in the UK.

[Download Exhibition Catalogue](#)

2.3 Proposals

If you are interested in hosting an event with us, please send us the following:

1. Title
2. Description of proposal and project agenda (circa 100 words)
3. Intended audience
4. 3-5 images
5. Proposed events and dates (number, description, expected attendees, flexibility)
6. Artist name and short bio (max 100 words)

Please send any queries or proposals to rsvp@periscope.uk. Selections will be made based on relevance to the Microscope themes, quality and imagination, and space availability. We will aim to get back to you within two weeks.

2.4 Things we'll need from you

Three weeks prior to opening

- Event dates to be confirmed and coordinated with Dan's Wine Bar
- Final title, name and date for signage (see format below)

Two weeks prior to opening

- Risk Assessment, confirmation of any insurances, key and lock-up agreement
- 3-5 images with captions for social media
- 100 word project and exhibition text for website
- Content for A5 hand-outs (text/images/plan layouts)

Installation and deinstallation

- We ask that exhibitors organise their own installation and deinstallation help. We will do our best to provide support with tools and extra hands where possible.
- We are happy to drill into the east and west walls, holes must be re-filled during de-install (Periscope will provide the paint).
- Installation and deinstallation periods to be agreed

- 1 Microscope shopfront
- 2 Example Signage for Riparian Score, June 2022
- 3 Signage artwork for Housed & Mortised, August 2022



1



2

Housed &
Mortised

Emi Shinmura

04 . 08

11 . 08

Open weekdays 14 - 18

rsvp@periscope.uk

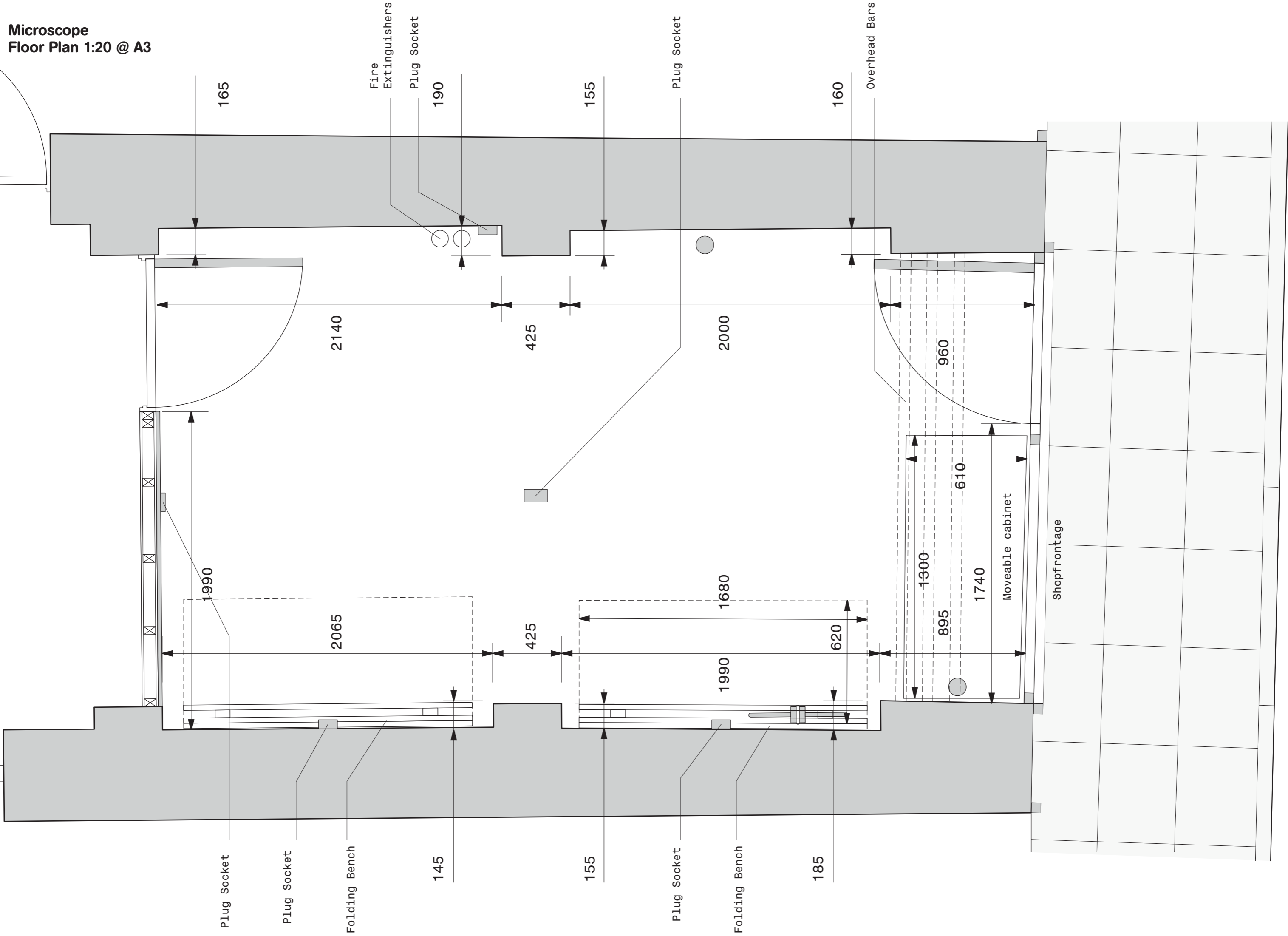
emishinmura.com

3

Appendix

Microscope
Floor Plan 1:20 @ A3

Scale
1:20cm



Periscope is a spatial design agency focused on regenerative design and public architecture.

We design and deliver resilient projects that work for people and the planet, grounding our interventions within their greater ecological, topographic and social fabric. In valuing meticulous research, technical rigour and plural voices we seek to meet the challenges of our own and future generations.